



28 Tapton Lodge Mews Tapton House Road, Sheffield S10 5BY



Lettings

28 Tapton Lodge

Per Calendar Month

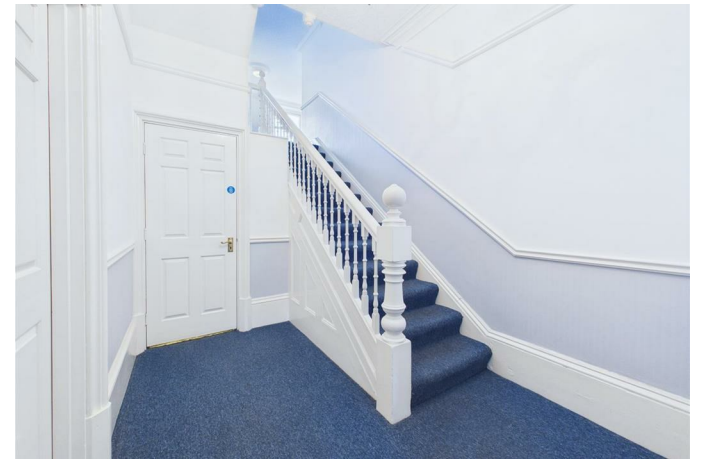
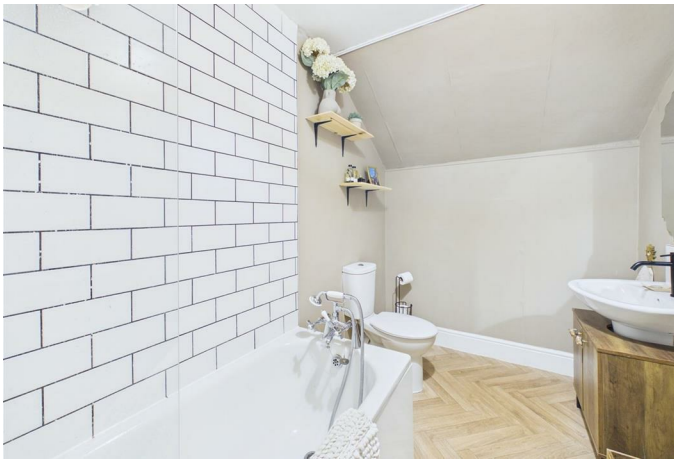
£850 Per Calendar

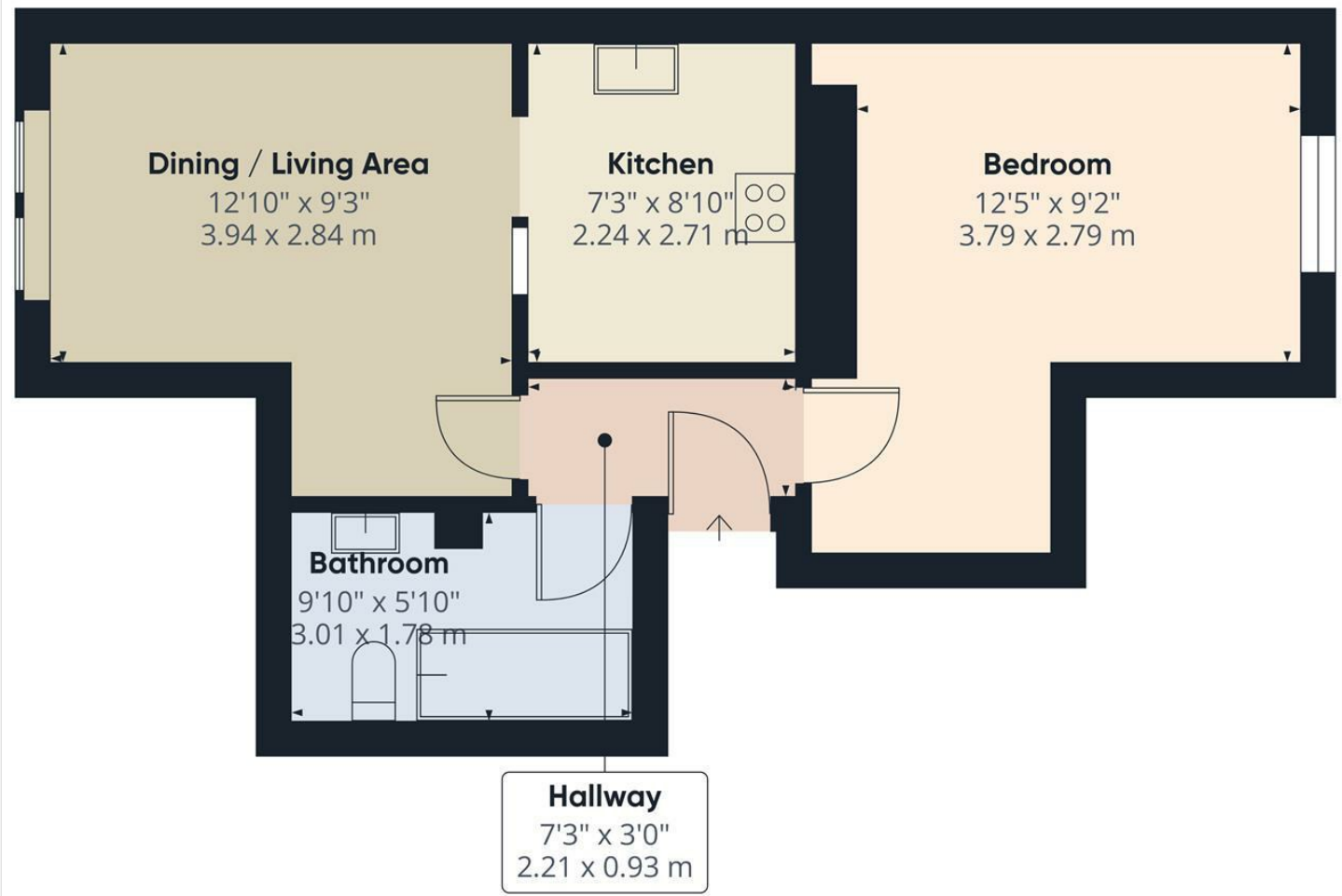
Forming part of an attractive period conversion, this lovely one-bedroom, second-floor apartment is ideally located for Broomhill's vibrant amenities, universities, and local hospitals.

Tastefully presented throughout and finished to a high standard, the accommodation begins with a communal entrance and staircase leading to a private entrance hallway. Inside, the property features a well-proportioned open-plan kitchen and lounge, a spacious master bedroom, and a full bathroom. Outside, residents enjoy the rare advantages of off-road parking, access to communal grounds, and secure allocated basement storage.

This property is offered unfurnished. Please note that smoking is not permitted within the property. The Energy Efficiency Rating is E and the Council Tax Band is A.







Approximate total area^m
442 ft²
41 m²

(1) Excluding balconies and terraces

Calculations reference the RICS IPMS 3C standard. Measurements are approximate and not to scale. This floor plan is intended for illustration only.

GIRAFFE360

While we endeavour to make our sales particulars fair, accurate and reliable, they are only a general guide to the property and, accordingly, if there is any point, which is of particular importance to you, please contact the relevant office. The Agents have not tested any apparatus, equipment, fittings or services and so cannot verify they are in working order. The buyer is advised to obtain verification. Please note all the measurement details are approximate and should not be relied upon as exact. All plans, floor plans and maps are for guidance purposes only and are not to scale. Under no circumstances should they be relied upon as exact or for use in planning carpets and other such fixtures, fittings or furnishings. YOUR HOME IS AT RISK IF YOU DO NOT KEEP UP REPAYMENTS ON A MORTGAGE OR OTHER LOAN SECURED ON IT. 'A Life Assurance policy may be requested.' 'Written Quotations of credit terms available on request.'

Banner Cross
T: 0114 268 3241
E: bannercross@saxtonmee.co.uk
www.saxtonmee.co.uk

Hathersage
T: 01433 650009
E: hathersage@saxtonmee.co.uk

Bakewell
T: 01629 815307
E: bakewell@saxtonmee.co.uk

Matlock
T: 01629 828250
E: matlock@saxtonmee.co.uk



Lettings